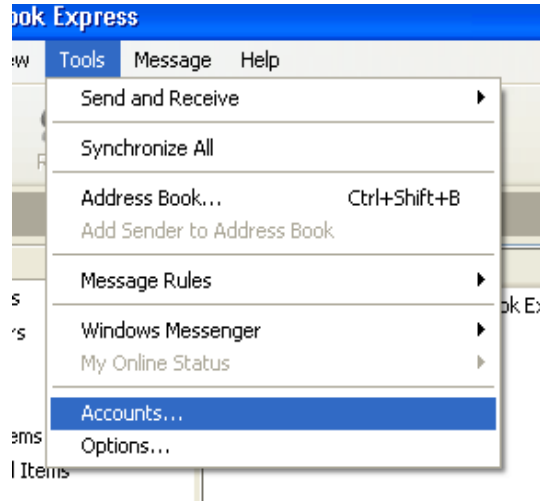
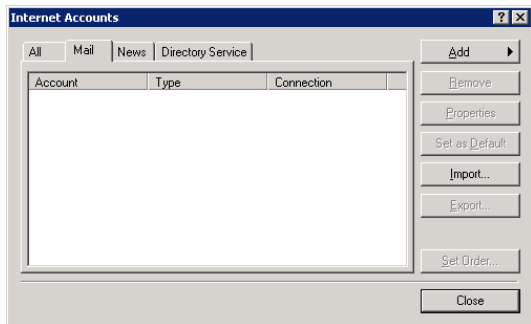


Outlook Express

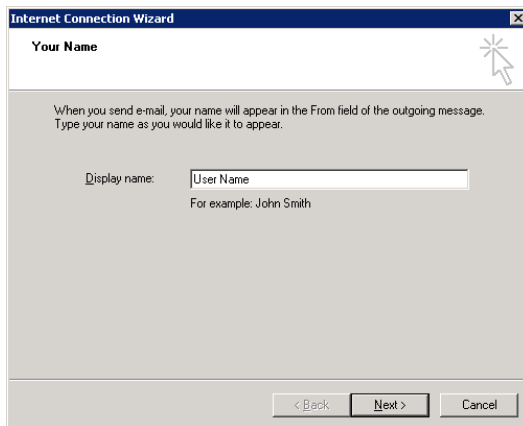
1. Open Outlook Express > Tools > Accounts



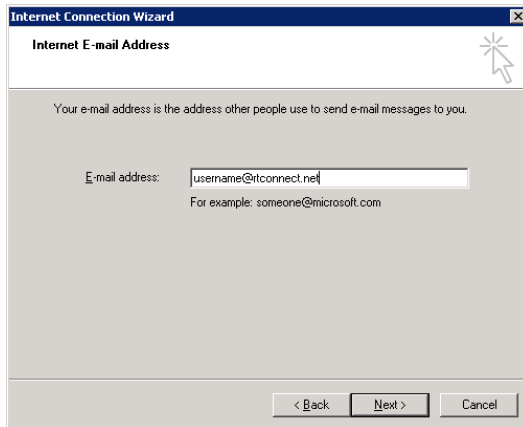
2. Click the 'Add' Button and select 'Mail'



3. Enter your full name



4. Enter your email address provided to you by RTConnect.net



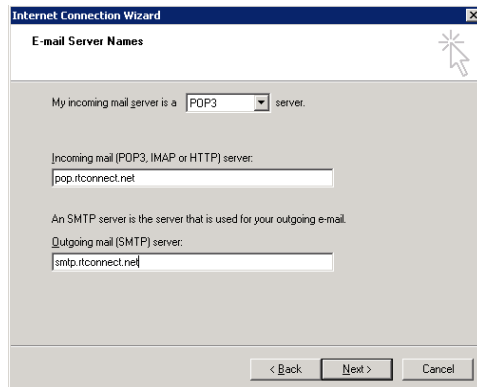
5. Fill out E-mail Server Names

a. Incoming mail (POP3, IMAP, or HTTP) Server:

pop.rtconnect.net

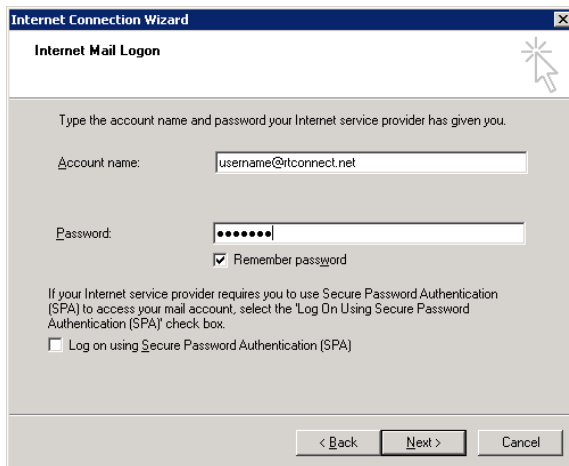
b. Outgoing mail (SMTP) server:

smtp.rtconnect.net



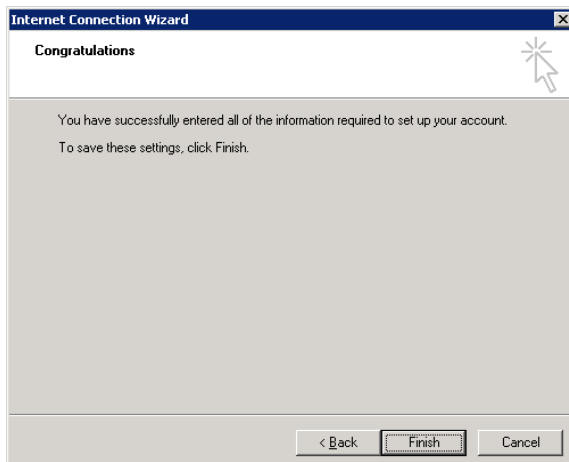
6. Fill out Internet Mail Logon

- a. Account name:
Your e-mail address
- b. Password:
Password provided by RTConnect.net
- c. Check 'Remember Password'



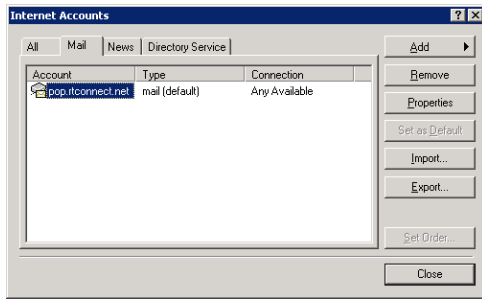
The screenshot shows the 'Internet Mail Logon' step of the Internet Connection Wizard. The window title is 'Internet Connection Wizard' and the subtitle is 'Internet Mail Logon'. The main text reads: 'Type the account name and password your Internet service provider has given you.' There are two input fields: 'Account name:' with the text 'username@rtconnect.net' and 'Password:' with a masked password '*****'. Below the password field is a checked checkbox labeled 'Remember password'. A note below states: 'If your Internet service provider requires you to use Secure Password Authentication (SPA) to access your mail account, select the 'Log On Using Secure Password Authentication (SPA)' check box.' There is an unchecked checkbox labeled 'Log on using Secure Password Authentication (SPA)'. At the bottom are three buttons: '< Back', 'Next >', and 'Cancel'.

7. Click 'Finish'



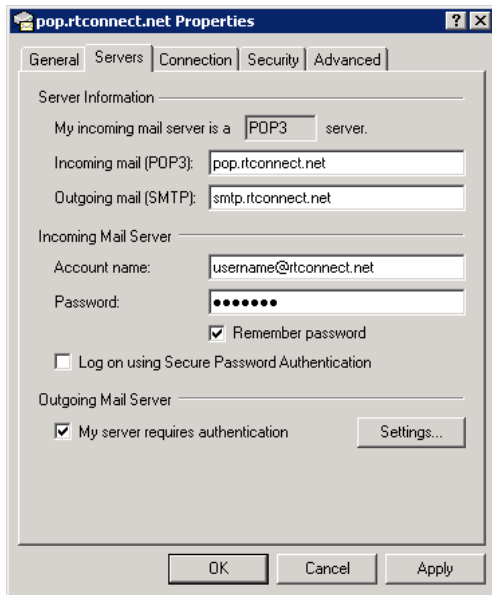
The screenshot shows the 'Congratulations' step of the Internet Connection Wizard. The window title is 'Internet Connection Wizard' and the subtitle is 'Congratulations'. The main text reads: 'You have successfully entered all of the information required to set up your account. To save these settings, click Finish.' At the bottom are three buttons: '< Back', 'Finish', and 'Cancel'.

8. Highlight the account you just created and click 'Properties'



9. Finalize configuration

- a. Click on 'Servers' tab at top of properties box
- b. Check 'My server requires authentication'
- c. Click 'OK'



10. Click 'Close'

